

HELLO, DOLLY!



Hello, Dolly!

Music and Lyrics by Jerry Herman
Book by Michael Stewart
Based on The Matchmaker by Thornton Wilder

May 13 - 28, 2022

Runtime: 2:30 with one intermission

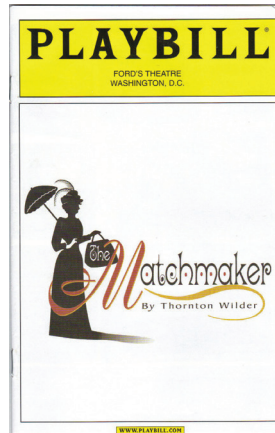
SPOTLIGHT STUDY GUIDE

For Teachers and Students



Pioneer Theatre Company's Student Matinee Program is made possible through the support of Salt Lake County's Zoo, Arts and Parks Program, The Simmons Family Foundation, and The Meldrum Foundation Endowment Fund.

Origins: *Hello, Dolly!* and *The Matchmaker*



Hello, Dolly! is based on Thornton Wilder's *The Matchmaker*. Originally titled *The Merchant of Yonkers*, the farcical play was a flop and Wilder revised and retitled it in 1954.

The most significant change when revising *The Merchant of Yonkers* was the expansion of a previously minor character named Dolly Gallagher Levi, who became the play's centerpiece.

A widow who brokers marriages and other transactions in 1890s Yonkers, New York sets her sights on local merchant Horace Vandergelder, who has hired her to find him a wife. After a series of slapstick situations involving mistaken identities, secret rendezvous behind carefully placed screens, separated lovers, and a trip to night court, everyone finds themselves paired with a perfect match.

The Matchmaker opened on Broadway in 1955. The director was awarded the Tony.

In 1964, *Hello, Dolly!* the musical was adapted from Wilder's play and opened on Broadway with lyrics and music by Jerry Herman, and the book by Michael Stewart.

The musical debuted at the Fisher Theater in Detroit in 1963, directed and choreographed by Gower Champion and produced by David Merrick, and moved to Broadway in 1964, winning 10 Tony Awards, including Best Musical. The show had first opened on Broadway in 1964 and by the time the show closed in 1970, it had become the longest-running musical in Broadway history, with nearly 3,000 performances.

The show has become one of the most enduring musical theater hits, with four Broadway revivals and international success. It has since become a star vehicle for some of the most famous women in entertainment, including Carol Channing, Pearl Bailey, Ginger Rogers, Betty Grable, Ethel Merman, Martha Raye, Bette Midler, and Barbra Streisand, who is since considered one of the best Dolly Levis.

It was also made into the 1969 award-winning film starring Barbra Streisand.

curtainup.com/hellodolllys

Characters:

Dolly Gallagher Levi: She is a matchmaker, meddler, opportunist, and a life-loving woman.

Horace Vandergelder: A client of Dolly. A well-known half-a-millionaire and widower.

Cornelius Hackl: Vandergelder's chief clerk.

Barnaby Tucker: An assistant to Cornelius at Vandergelder's Hay & Feed store.

Irene Molloy: A widow and a beautiful, smart, fun-loving milliner with a hat shop in New York City.

Minnie Fay: A young girl who works in Irene's hat shop.

Ambrose Kemper: A young and explosive struggling artist seeking to marry Ermengarde.

Ermengarde: The young niece of Horace Vandergelder. She cries often and wants to marry Ambrose.

Ernestina Money: An eccentric-looking girl in need of Dolly's matchmaker services.

Rudolf Reisenweber: Maître d' of the Harmonia Gardens restaurant.

Judge: An emotional night court judge, who is easily moved to tears by romance.

Mr. (or Mrs.) Rose: An old friend of Dolly's.

bdb.com/broadway-production/hello-dolly
broadwayworld.com

Life in the 1890s



A dinner party in the 1890's.

The 1890s was a decade of the Gregorian calendar that began on January 1, 1890, and ended on December 31, 1899.

In the United States, the 1890s were marked by a severe economic depression sparked by the Panic of 1893. This economic crisis would help bring about the end of the so-called "Gilded Age," and coincided with numerous industrial strikes. The period was sometimes referred to as the "Mauve Decade," because William Henry Perkin's aniline dye allowed the widespread use of that color in fashion.

Transportation consisted of bikes and a few



of the new Motor Wagons. The bike boom swept Europe and America with hundreds of bicycle manufacturers in the biggest bicycle craze to date.

Coca-Cola was also a popular drink in the 1890s, just like it is today, but with ingredients that would not be allowed today! Some ads for Coke marketed the drink as a type of medicine that can cure headaches and exhaustion.



Dress historian James Laver wrote:

"The old, rigid society-mould was visibly breaking up... For the young, there was a new breath of freedom in the air, symbolized both by their sports costumes and by the extravagance of



fashionhistory.fitnyc.edu/

their ordinary dress. It was perfectly plain that the Victorian Age was drawing to its close."

ACTIVITY QUESTIONS:

What other products or devices can you think of that were invented in the 1890s?

How were day to day activities different in the 1890s before cars were widespread?

The many women who have played Dolly Levi



Carol Channing starred in the original Broadway cast in 1964. She went on to play the role from 1964–66; 1977–79; 1981–83; and 1994–96, and today is considered the most iconic Dolly Levi.

Besides Channing, six other stars played the title role during the seven years the original show was on Broadway. They included: **Ginger Rogers, Martha Raye, Betty Grable, Pearl Bailey, Phyllis Diller, and Ethel Merman.**



Barbra Streisand starred in the movie adaptation of *Hello, Dolly!* in 1969. The film won three Academy Awards for Best Art Direction, Best Score of a Musical Picture, and Best Sound. It was nominated for a further four Academy Awards, including Best Picture.

Although the film eventually broke even, it was not a commercial success.



Pearl Bailey took over the role in Nov. 1967, almost four years after the production opened. Bailey was joined by an all-black cast. The response to her performance was overwhelming, breathing new life into a then already long-running production. The entire cast recorded its own cast album as well—an unusual practice then and now.

The original production closed in 1970, but Bailey came back to Broadway in the role for a new revival that was created expressly for her in 1975.



The acclaimed revival of *Hello, Dolly!* opened at the Shubert Theatre April 20, 2017. The production, starring **Bette Midler** as Dolly Levi, played 34 previews and 550 performances before closing August 25, 2018.

The musical earned 10 Tony Award nominations, winning four, including Best Revival of a Musical, and Best Actress and Best Featured Actor in a Musical for Midler and Gavin Creel.

ACTIVITY QUESTION:
Can you name some of the actors who have played the role of Horace Vandergelder?

ACTIVITY:

HISTORICAL INSPIRATION

OBJECTIVE:

To learn how historical context has affected and inspired the creation of musical theatre, and to develop research and public speaking skills

ACTIVITY:

Choose a historical (not contemporary) musical to research and then create a presentation of how the show reflects the times in which it was created, including historical figures and relevant social or political issues. Suggested shows: *Oklahoma*, *Hairspray*, *West Side Story*, *Bye Bye Birdie*, *Peter Pan*, *Annie*, *The Sound of Music*, *Ragtime*, or *South Pacific*.

Watch videos of the show, study song lyrics, and research the time period in which the musical was written. Could that musical be made today? Why or why not?

PTC's *Hello, Dolly!* has a multi-racial cast, including in lead roles. In fact, most Broadway shows now do. But many historical Broadway shows always featured white actors in the lead roles, even when the race or ethnicity was not critical to the play.

Some historical Broadway shows, including *Hello, Dolly!* with Pearl Bailey, were conceived to be produced with an entirely non-white cast. Why was this done?

What other Broadway shows, historical or contemporary, have been cast with a predominately minority cast? Why?

MINI QUIZ:

1. When did *Hello, Dolly!* open?
 - a. 1910
 - b. 1964
 - c. 1998
 - d. 2007
2. Who wrote the book (the story) for this musical?
 - a. Jerry Herman
 - b. Carol Channing
 - c. Walter Matthau
 - d. Michael Stewart
3. Which of Thornton Wilder's plays was *Hello, Dolly!* based on?
 - a. *Our Town*
 - b. *The Matchmaker*
 - c. *The Ides of March*
 - d. *The Skin of Our Teeth*
4. How long did *Hello, Dolly!* hold its spot as the longest running musical on Broadway?
 - a. 10 months
 - b. 10 days
 - c. 10 years
5. Who was the first actress to portray Dolly?
 - a. Pearl Bailey
 - b. Ethel Merman
 - c. Betty Grable
 - d. Carol Channing
6. Who is Ermengarde is love with that her uncle won't allow her to marry?
 - a. Horace Vandergelder
 - b. Cornelius Hackl
 - c. Ambrose Kempner
 - d. Barnaby
7. Who is the head waiter at Harmonia Gardens?
 - a. Ambrose
 - b. Cornelius
 - c. Barnaby
 - d. Rudolph
8. Who does Irene end up falling in love with?
 - a. Vandergelder
 - b. No one
 - c. Cornelius
 - d. Barnaby
9. Where is everyone going when they sing *Put On Your Sunday Clothes*?
 - a. church
 - b. Yonkers
 - c. New York City
 - d. To Vandergelder's wedding

OUR EQUITY CAST



LUCY ANDERS*
(Ensemble)

LUCY ANDERS (Ensemble) Returns to PTC after appearing in *Sweeney Todd* in 2018. First National Tour: *Something Rotten*. Baldwin Wallace University alum.

HANNAH BALAGOT (Ermengarde) Past performance credits include Anybodys in *West Side Story* (International Tour, Barrington Stage, North Shore Music Theater), Danny Who in *Dr. Seuss: How the Grinch Stole Christmas* (Grand Ole Opry), Erma in *Anything Goes* (Moonlight Stage).



HANNAH BALAGOT*
(Ermengarde)

KYLE CARESS (Ensemble) returns to PTC after appearing in *Elf!* Select credits include *R+H's Cinderella* (National Tour); *Seesaw* (Off-Broadway/J2 Spotlight), as well as various shows at The Rev Theatre Co., Studio Tenn, and Highlands Playhouse. BFA from Belmont University.

KRIS COLEMAN (Horace Vandergelder) A graduate of Hampton University. His theater credits include *Jersey Boys* (Hal Miller Broadway and Las Vegas). Television and film credits include: "Billions" (Showtime), "The Big House," (ABC), "Dumbbomb Affair," and "The Clone."



KYLE CARESS*
(Ensemble)

LENNY DANIEL (Ensemble/Associate Director/Choreographer) was last seen in *Something Rotten!* at PTC. Choreographed *Mary Poppins* (Utah Shakespeare Festival) and *Spamalot* (Geva Theatre Center and Arkansas Repertory Theatre). Performing credits include Broadway: *Cats* and *The Wizard of Oz*.

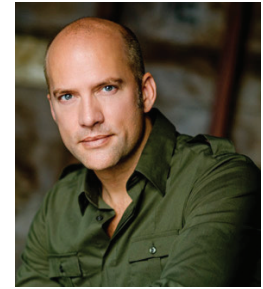
PAIGE DAVIS (Dolly Levi) Broadway credits include Gloria in *Boeing-Boeing* and Roxie in *Chicago*. National Tours: *Sweet Charity* and *Chicago*. TV: "Home Made Simple" (OWN), "Trading Spaces" (TLC). Davis is also known around Utah as being the RC Willey spokesperson for ten years.



KRIS COLEMAN*
(Horace Vandergelder)

ANDY FRANK (Ensemble) He has traveled the world performing as Big Deal in *West Side Story* in 20 countries. Regional performance credits include Gremio in *Kiss Me, Kate* and Rolf in *The Sound of Music*.

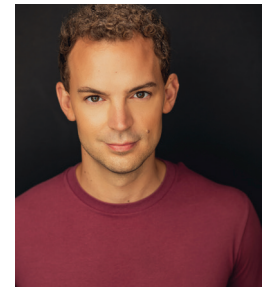
AKINA KITAZAWA (Ensemble) She is originally from Japan. Most recently she has performed in the Christmas Spectacular at Radio City Music Hall. National Tour: *The King and I*. Regional Theatre: *Jerome Robbins' Broadway*.



LENNY DANIEL*
(Ensemble)



PAIGE DAVIS *
(Dolly Levi)



ANDY FRANK*
(Ensemble)



AKINA KITAZAWA *
(Ensemble)

EQUITY CAST CONT.



KELLY MCCORMICK*
(Irene Molloy)

KELLY MCCORMICK (Irene Molloy) returns to PTC, where she appeared as Fantine in *Les Misérables*. Broadway: *Carousel*. Broadway National Tours: *Truly Scrumptious* in *Chitty Chitty Bang Bang*; *Les Misérables* (Factory Girl/Fantine U/S); and *The Sound of Music*. B.M., Vocal Performance (Michigan State University); MFA, Drama and MM, Vocal Performance (CCM).



MANDY MCDONELL*
(Ensemble)

MANDY MCDONELL (Ensemble) returns to PTC after last appearing in *Mamma Mia!* National Tour: *R+H's Cinderella* (Ensemble U/S Ella, Gabrielle). Regional: *Mary Poppins* (Ensemble) with Alabama Shakespeare Festival and Utah Shakespeare Festival. BFA in musical theatre from the University of Utah.

ALEXANDER MENDOZA (Cornelius Hackl) was last seen in *The Phantom of the Opera* World Tour where he understudied/performed the role of Raoul. 1st National Tour of *Sister Act*, the North American Tour of *Mamma Mia!*, *Disney's Beauty and the Beast* (The Alabama Shakespeare Festival and Zach Theatre).



ALEXANDER MENDOZA*
(Cornelius Hackl)

MICHAEL J. RIOS (Barnaby Tucker) Film/TV: *Disney's Newsies: A Broadway Musical* (Disney+), Hyped for Halftime (Superbowl 2014). Tours: *Hello, Dolly!* (Broadway revival and 50th anniversary), *Disney's Newsies*, *Cats*, *The Wizard of Oz*. Regional: Lyric Opera of Chicago, Maltz Jupiter, Syracuse Stage, Northern Stage.

PETER SURACE (Ensemble) Most recently seen at PTC as Lord Clapham/Judge in *Something Rotten!* National Tours: *Something Rotten!*, *Joseph and the Amazing Technicolor Dreamcoat*, *The Elf on the Shelf: A Christmas Musical*. Disney Cruise Line: *Twice Charmed* (Prince Charming), *Tangled: The Musical*, *Disney Dreams*. BFA Musical Theater.



MICHAEL J. RIOS*
(Barnaby Tucker)

ALEX JOSEPH STEWART (Ensemble) former company member of the Sacramento Ballet and a proud graduate of the Pacific Conservatory Theatre. Theatrical credits include: *Oklahoma!* (Goodspeed Musicals, PCPA & Sierra Rep.), *Annie!* (North Carolina Theatre), *Elf: The Musical!* (National Tour), *Oliver!* and *A Connecticut Christmas Carol* (Goodspeed Musicals), *Kiss Me Kate*, and *West Side Story* (Marriott Theatre).

DORI WAYMER (Minnie Fay) is a proud FSU alum. Select Regional: *A Wonderful World: World Premiere* (ensemble, U/S Daisy), *Cinderella*; Nellie in *A Grand Night for Singing*; Minnie Fay in *Hello, Dolly!*, Lorraine in *All Shook Up*; Gary Coleman in *Avenue Q*; *Godspell* (Learn Your Lessons Well); and Alana in *The Little Mermaid*.



PETER SURACE*
(Ensemble)



ALEX JOSEPH STEWART*
(Ensemble)



DORI WAYMER *
(Minnie Fay)