

A NEW MUSICAL COMEDY

shucked

SHUCKED

Music and lyrics by Brandy Clark and Shane McAnally

Book by Robert Horn

Directed by Jack O'Brien

Oct. 28 - Nov. 12, 2022

SPOTLIGHT STUDY GUIDE

For Teachers and Students



Pioneer Theatre Company's Student Matinee Program is made possible through the support of Salt Lake County's Zoo, Arts and Parks Program, The Simmons Family Foundation, and The Meldrum Foundation Endowment Fund.

A NEW MUSICAL COMEDY **shucked**

What do you get when you pair a semi-neurotic, New York comedy writer with two music superstars from Nashville? A hilarious and audacious farm-to-fable musical about the one thing Americans everywhere can't get enough of: corn.

CREATIVE TEAM

Music and lyrics by **Brandy Clark**
and **Shane McAnally**
Book by **Robert Horn**
Directed by **Jack O'Brien**

WHAT IS SHUCKED?

Shucked is the new musical comedy that proves sometimes tearing down a few walls, rather than growing them, is the only way to preserve our way of life. *Shucked* has an outrageously funny book by Tony Award®-winner Robert Horn, an irresistible score by Grammy Award®-winning songwriting team of Brandy Clark and Shane McAnally, and direction by three-time Tony Award®-winner Jack O'Brien.

FROM PTC TO BROADWAY

Did you know that this production of *Shucked* is currently Broadway-

bound? This means that the show's run at Pioneer Theater Company can be considered an out-of-town tryout before it arrives on Broadway sometime in the near future.

A tryout is the staging of performances of a theatrical production at an out-of-town venue for evaluation and possible revision before the production premieres on Broadway or the West End (i.e., the highest level of live theater in the English-speaking world). A tryout is similar to a workshop production in that the point is to identify and eliminate embarrassing flaws before the production is put on before highly demanding New York or London audiences. Unlike a workshop, it is usually much more developed, and close to the intended final product.

If a tryout goes well, then that assures the project's investors of its eventual success—namely, when the production debuts on Broadway or the West End, it will already be fully polished and more likely to receive favorable reviews and play to sold-out houses for several years, so they can recoup their investment. Conversely, tryouts enable theatrical audiences in less prestigious markets to preview potential future hits and

get bragging rights that they saw those works first. Pioneer Theatre Company audiences get to say that they saw this show first before it ever made it to Broadway!

[en.wikipedia.org/wiki/Tryout_\(theatre\)](http://en.wikipedia.org/wiki/Tryout_(theatre))

WHAT'S SO SPECIAL ABOUT BROADWAY?

Broadway is the oldest north-south street in New York City. It existed as a path traveled by American Indians long before Europeans arrived. Today, there are many famous sites along the several miles of Broadway. But one small stretch comes to mind when most people hear the word "Broadway." It's the stretch between 42nd and 53rd streets—including Times Square—that is considered the home of the American theatre industry.

This famous section of Broadway is known as the Theater District. You will also often hear it called "The Great White Way." This nickname started when it became one of the first streets in the U.S. to be lit with electric lights. Millions of lights on theater marquees and billboard advertisements help brighten the night sky.

wonderopolis.org/wonder/Whats-So-Special-About-Broadway

A NEW MUSICAL COMEDY

shucked

WORD SEARCH

C B C M E H T G E M S T O N E Y W S S N
 O E R O D Q N Z H M U K G R A M M Y B F
 U F M A R E G M O Y N X M F A W E L M M
 N R G W N N T I N Y E P A I N I T E G A
 T P O P B D C K X A L F Q K S O G Z M I
 R G R D I R Y O M T S L E N S A A I C Z
 Y M D K O O U C B Z W H Y F J X B Z M Y
 M U Y B Y W N X L C M F V B Y R K Z S M
 U S F S E K S E N A O Q B I D S M C H T
 S I O X F V Y E E F R U D B L O S O U Q
 I C O A O C G T H R D K N T B L P M C M
 C A T Q T G A Y Q J T P B T M K E E K G
 T L K K M O M S Z U Q H Q R Y C I D E Y
 R M A I Z E N Q T N B U E M B T R Y D V
 Y L O Y O R X Y W H U K I A X L B O P U
 O P B R O A D W A Y W U A K T F O T P F
 U N B E A U X H I W R D H K E R N A L S
 T F D S H O L S Y C A R I J J H E F I J
 H V G I G X H U S K C R I T Y Y N E P A
 M F V L V U S K V P Z T D N F F F T K U

PIONEER THEATRE	CORN COB COUNTY	
COUNTRY MUSIC	BRANDY CLARK	NASHVILLE
TONY AWARD	BROADWAY	MUSICAL
PAINITE	GEMSTONE	KERNALS
GRAMMY	SHUCKED	TRYOUT
COMEDY	CROPS	MAIZY
MAIZE	BEAU	HUSK
CAST	GORDY	FOOT

ACTIVITY QUESTIONS

Can you name some Broadway and non Broadway musicals that were either written by famous musicians from pop/rock/country music or based off their music?

EXAMPLE: *Mamma Mia!* is based off the music of pop music group ABBA.

What if...

Create and answer – what if questions.

Write down your own 'what if' questions and share them with the class. Choose 3-5 of them to act out as new scenes for the show.

EXAMPLE: What if the town didn't grow corn? What other kind of crop or product could the town struggle with producing?

THE CREATIVE TEAM BEHIND *SHUCKED*

THE SONGWRITERS: BRANDY CLARK AND SHANE MCANALLY



Brandy Clark and Shane McAnally are hit Nashville singer/songwriters who have now turned to musical theater with *Shucked*.

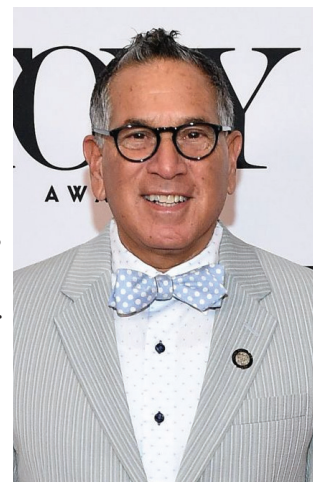
Shane McAnally was originally a solo artist for Curb Records in 1999, and charted three singles on Hot Country Songs. He began working as a producer

in 2013 with Kacey Musgraves' debut album "Same Trailer Different Park." From the early 2010s onward, McAnally has worked almost exclusively as a songwriter and producer.

Brandy Clark's songs have been recorded by Sheryl Crow, Miranda Lambert, the Band Perry, Reba McEntire, LeAnn Rimes, Billy Currington, Darius Rucker, and Kacey Musgraves. She was nominated for Best New Artist at the 2015 Grammy Awards.

THE PLAYWRIGHT: ROBERT HORN

Robert Horn is a playwright, screenwriter, and producer. He is best known as the Tony-winning book writer for Broadway musicals *Tootsie* and *13*; and the screenwriter for Netflix's *13: the Musical*; and the Disney Channel Original Movies *Teen Beach Movie*, *Teen Beach 2*, *Sharpay's Fabulous Adventure*, and *The Suite Life Movie*.



Horn, a New York native, studied theater

at New York University Tisch School of the Arts and New York's Circle in the Square Theatre School.

THE DIRECTOR: JACK O'BRIEN

Jack O'Brien is an American director, producer, writer, and lyricist. He served as the Artistic Director of the Old Globe Theatre in San Diego, California from 1981 through the end of 2007.



O'Brien has won three Tony Awards, and been nominated for seven more, and won five Drama Desk Awards. He has directed and produced musicals, including *The Full Monty* and *Hairspray*; contemporary dramas such as *The Piano Lesson*, *The Invention of Love* and *The Coast of Utopia*; Shakespeare classics, including *Hamlet* and *Henry IV* (a combination of Part 1 and Part 2); and operas, including *Il tritico* at the Metropolitan Opera.

[wikipedia.org/wiki](https://www.wikipedia.org/wiki)

PAINITE: THE FEATURED GEM IN *SHUCKED*

In the Mogok region in Myanmar, sapphires, rubies, spinels, and other gemstones accumulate in river beds after washing down from the surrounding forested hills. These have been mined since ancient times.

In 1957, two deep red stones from a batch donated to the Natural History Museum in London turned out to be completely new to science. A tiny slice from one crystal was used for research, and the new mineral was named “painite” after the original donor, the British mineralogist and gem dealer, Arthur Pain.

A third painite was identified in 1979, but it was not until 2001 that a fourth was found in Myanmar. By 2005, a source outcrop for painite was finally discovered, nearly half a century after the original identification. Several thousand stones have now been recovered, but the small number of cut gems remains the preserve of specialist collectors.

Painite’s extreme rarity is due to it containing the chemical elements zirconium and boron, which do not

normally associate with each other in nature and don’t occur together in any other mineral.

theconversation.com/what-is-a-gem



ACTIVITY QUESTION:

Like diamonds, rubies, sapphires and emeralds, can you name any other precious stones that are considered gemstones?

INTERESTING FACTS ABOUT: CORN!

Corn is a wild grass.

Over 10,000 years ago, people from Southern Mexico collected and consumed a wild grass called ‘teosinte,’ which is now what we call ‘maize.’ From Mexico, maize spread during migrations, into the southwest areas of the U.S. and south to Peru.

Corn is not native to Canada.

Corn, a.k.a. maize, may be one of Canada’s traditional crops, but it is not native. Maize was first cultivated by the First Nations in the Ottawa region and later by European settlers.

Popcorn is a type of corn.

Popcorn is a type of ‘flint’ corn. When heated, the outer shell allows moisture in and enough steam and pressure causes the corn to crisp and puff into the delicious popcorn we love to munch on.



There is an even number of rows in every cob of corn.

The average number of kernels in a 16-row cob of corn is 800.

Corn was used as a substitute for coffee!

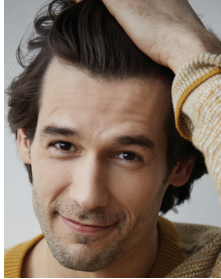
In the 1800s when coffee was too expensive and scarce, thrifty Americans used parched corn as a coffee substitute and the ashes of burnt corn cobs were used as baking soda.

Corn is an ingredient in fireworks.

There are plenty of industrial products that use corn, including paper, antibiotics, glue, insulation, paper, ethanol, shoe polish, cosmetics, detergent, paint, and much more.

freshcityfarms.com

THE CAST



JOHN BEHLMANN* (Gordy) Broadway: Max Van Horn in *Tootsie*. Off-Broadway: *The 39 Steps*. Film: *Confess, Fletch*; *Standing Up Falling Down*; *The Wolf of Wall Street*; *Revolutionary Road*; *Dead Sound*. TV: *Riverdale*, *Good Behavior*, *Madam Secretary*, *Instinct*, *Odd Mom Out*, *Blue Bloods*, *Good Wife*. John is also a trapeze artist, photographer, and proud dad.



KEVIN CAHOON* (Peanut) Plays Earl Clark on FOX's *Monarch*. Broadway: *The Who's Tommy*, *The Lion King*, *The Rocky Horror Show*, *Chitty Chitty Bang Bang*, *The Wedding Singer*. TV: *GLOW*, *A Series of Unfortunate Events*, *Nurse Jackie*, *Modern Family*, *Six Degrees*, *The Good Wife*, *Elementary*, among others. Film: *The Curse Of The Jade Scorpion*, among others.



ANDREW DURAND* (Beau) Broadway: *Ink*, *Head Over Heels*, *War Horse*, *Spring Awakening*. Television: CBS' *Madam Secretary* (Guest Star), *NCIS New Orleans* (Guest Star), NBC' *Law and Order: Organized Crime* (Guest Star), Apple TV: *Servant* (Recurring Guest). Film: *One December Night*, *Here Today*.



CAROLINE INNERBICHLER* (Maizy) *Little House on the Prairie* (national tour); *Guys and Dolls*, *Little House on the Prairie* (Guthrie Theater); *Mamma Mia!*, *White Christmas*, *The Sound of Music*, *The Pirates of Penzance* (Ordway Center); *Bye Bye Birdie*, *Fiddler on the Roof*, *The Little Mermaid* (Chanhassen Dinner Theaters).



ASHLEY D. KELLEY* (Storyteller 1) Off-Broadway: *Eve's Song*, *An American Tall Tale*. Regional: *An Act of God* (Bucks County Playhouse), *Bella: An American Tall Tale* (Dallas Theater Center), Dorothy in *The Wiz* (Oregon Shakespeare Festival). Film: *Home Team* (Netflix). TV: Recurred on *Insatiable* (Netflix), *Luke Cage* (Netflix), *Bull* (CBS), *Chicago PD* (NBC).



ALEX NEWELL* (Lulu) has an extensive list of credits both in Broadway and television. TV credits include the recent fan favorite: *Zoey's Extraordinary Playlist*, along with the Emmy nominated Christmas special; *Our Kind of People*, and two hit Fox series, *Empire* and *Glee*. Broadway credits include *Once On This Island*.



TAYLOR TRENCH* (Storyteller 2) Broadway: *To Kill a Mockingbird*, *Dear Evan Hansen*, *Hello, Dolly!*, *The Curious Incident of the Dog in the Night-time*, *Matilda*, *Wicked*. Off-Broadway: *Bare*, *Rent*. World Premieres: Dallas Theater Center, Williamstown Theatre Festival, La Jolla Playhouse, Barrington Stage. TV/Film: *Evil* (Paramount+), *Law & Order: SVU* (NBC).



MIKI ABRAHAM* (Female Swing, u/s Lulu) Miki is truly just happy to be here! Past credits include: *Beautiful: The Carole King Musical* (national tour), *Once On This Island* (national tour), and *The Glee Project* (Season 1). She is a graduate of Northern Kentucky University, B.F.A. Acting.



DWAYNE CLARK* (Ensemble, Grandpa) Broadway: *Paradise Square*, The Emmy and Tony award winning cast of *The Color Purple Revival*, *Spider-Man Turn Off The Dark*, *In The Heights*, *Crybaby*, *Tarzan*, *Urinetown*, *Smokey Joe's Café*, New York City Opera *Porgy and Bess*. Commercials, VO for audiobooks and film.



RHEAUME CRENSHAW* (Ensemble, u/s Storyteller 1) Broadway: *Caroline or Change* (revival), *Groundhog Day*, *Amazing Grace*. Tours: *Waitress* (1st Ntn'l). Regional: Cincinnati Playhouse in the Park, Actors' Theatre of Louisville, Miami New Drama, Barrington Stage, St. Louis Black Rep, Congo Square/Goodman Theatre, and Crossroads.



KAITLYN DAVIDSON* (Ensemble, u/s Maizy) Broadway: *Rodgers + Hammerstein's Cinderella*; *Nice Work If You Can Get It*. National Tours: *CATS* (Jellylorum); *Bright Star* (Lucy Grant); *R+H's Cinderella* (Ella); *Irving Berlin's White Christmas* (Judy). Other Favorites: Transport Group: *The Unsinkable Molly Brown* (Maureen). TV: *Law & Order: Organized Crime* (Elizabeth Stabler).



JAYGEE MACAPUGAY* (Ensemble) Broadway: *School of Rock*. Off-Broadway/The Public Theater: *Suffs*, *Soft Power*, *Here Lies Love*, *Wild Goose Dreams*. Recent Regional: *Hair* (The Old Globe), *The Unofficial Bridgerton Concert* (Kennedy Center). TV/Film: *False Positive* (Hulu), *WWHL* (Bravo), *The Language Lesson* (YouTube).



SCOTT STANGLAND* (Ensemble, u/s Storyteller 2) is a New York-based actor and musician. Broadway: *Natasha*, *Pierre*, and *The Great Comet of 1812* (Pierre); *Once* (Eamon). Off-Broadway: *Cyrano* (New Group). Select TV: *The Blacklist* (NBC); *The Deuce* (HBO); *Wu Tang* (Hulu); *New Amsterdam* (NBC). Scott also plays in the band Youth in a Roman Field.



ESTEBAN SUERO* (Ensemble, u/s Beau) NYC-based, Florida-raised actor, singer-songwriter, and dog dad. Oklahoma City University – Master's Degree in Opera Performance. Recent credits: Ernie (principal) in the world premiere of *Rattlesnake Kate* (Denver Center of Performing Arts); NBC's *New Amsterdam*; HBO's *The Other Two*; Freeform's/Hulu's *Everything's Trash*.



YASMEEN SULIEMAN* (Ensemble) Singer/songwriter who has written/performed internationally. Broadway: *Beautiful: The Carole King Musical*, *Paradise Square*. Tour: *Little Shop of Horrors*. Off-Broadway: *Trevor*, *Junie B. Jones*. Lincoln Center: *The Scarlet Pimpernel*. Regional: *The Tale of Despereaux* (Berkeley). TV: *The Marvelous Mrs. Maisel*, *Hi-5* (TLC).



QUINN VANANTWERP* (Ensemble, u/s Gordy, Peanut) Broadway: *Jersey Boys*, *The Play That Goes Wrong*. TV/Film: *Better Call Saul*, *The Affair*, *I'm Dying Up Here*, *Blue Bloods*, *The Good Wife*, *Elementary*, *Shades of Blue*, *The Following*, *The Marvelous Mrs. Maisel*, *Ma Rainey's Black Bottom* & *Four Christmases*. Big thanks to BRS/GAGE and his "ebullient" wife Mackenzie Bell.



ALAN WIGGINS* (Male Swing, covers Grandpa) Broadway: *The Lion King*, *Beautiful: The Carole King Musical*, *Pretty Woman: The Musical*, *Paradise Square*. Off-Broadway: *Oratorio for Living Things* (Ars Nova). Love to my family and friends. Very grateful to the creative team for this opportunity.

*Actors' Equity Association member