



# Something Rotten!

BOOK BY KAREY KIRKPATRICK & JOHN O'FARRELL  
MUSIC AND LYRICS/CONCEIVED BY KAREY KIRKPATRICK &  
WAYNE KIRKPATRICK

February 25 - March 12, 2022

*Runtime: 2:30 with one intermission*

## SPOTLIGHT STUDY GUIDE

For Teachers and Students



Pioneer Theatre Company's Student Matinee Program is made possible through the support of Salt Lake County's Zoo, Arts and Parks Program, The Simmons Family Foundation, and The Meldrum Foundation Endowment Fund.

# The Inspiration: SHAKESPEARE & BROADWAY MUSICALS

Book by **Karey Kirkpatrick** and **John O'Farrell**

Music & Lyrics by **Karey Kirkpatrick** and **Wayne Kirkpatrick**

## About *Something Rotten!*

The crowd-pleasing musical farce, *Something Rotten!* was created by Grammy Award-winning songwriter Wayne Kirkpatrick, and successful screenwriters Karey Kirkpatrick and John O'Farrell. *Something Rotten!* was lauded by audience members and critics alike.

Set in the 1590s, brothers Nick and Nigel Bottom are desperate to write a hit play but are stuck in the shadow of that Renaissance rock star known as "The Bard." When a local soothsayer foretells that the future of theatre involves singing, dancing, and acting at the same time, Nick and Nigel set out to write the world's very first musical. But amidst the scandalous excitement of opening night, the Bottom Brothers realize that reaching the top means being true to thine own self, and all that jazz.

## References to Musical Theatre

*Something Rotten!* makes tons of fun references to modern day musical theatre.

[mtishows.com/something-rotten](http://mtishows.com/something-rotten)

The punchy song "A Musical" in *Something Rotten!*, holds 20 different homages to Broadway favorites including: *Cats*, *Annie*, *Chicago*, *Les Misérables*, *West Side Story*, *The Music Man*, and *Rent* just to name a few.

Give the song a listen, see how many references you can find on and see for your own!

## The first piece of musical theatre: *The Black Crook*

The first original theatre piece in English that conforms to the modern conception of a musical, adding dance and original music that helped to tell the story, is generally considered *The Black Crook*, which premiered in New York in 1866.

The production was a staggering five-and-a-half hours long, but despite its length, it ran for a record-breaking 474 performances. The same year, *The Black Domino/Between You, Me and the Post* was the first show to call itself a "musical comedy."

These musical comedies featured characters and

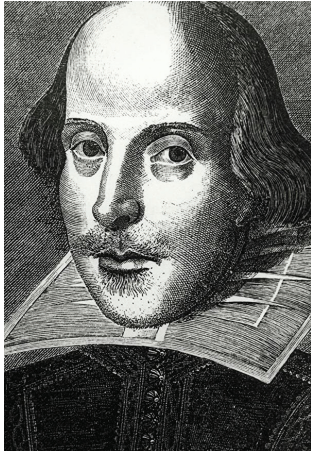
situations taken from the everyday life of New York's lower classes and represented a significant step away from vaudeville and burlesque, and towards a more literate form. [musicals101.com](http://musicals101.com)



Promotional material for *The Black Crook*



# The Inspiration: CONT.



William Shakespeare 1564 - 1616

## About William Shakespeare

William Shakespeare was born on April 23, 1564 to John Shakespeare and Mary Arden. He grew up in Stratford-upon-Avon, and at the age of eighteen, he married Anne Hathaway.

## Writing Style

Shakespeare is most known for his unique writing style and rhythms. This rhythm, known as iambic pentameter, was written in verse, blank verse, and prose. Blank verse is still written in iambic pentameter, however, the lines do not rhyme. Contrastingly, prose is written.

## Chamberlain's Men

Chamberlain's Men, which was later retitled The King's Men, was the troupe of actors that mainly produced Shakespeare's play. A group

of only men, the actors would take on both the male and female roles.

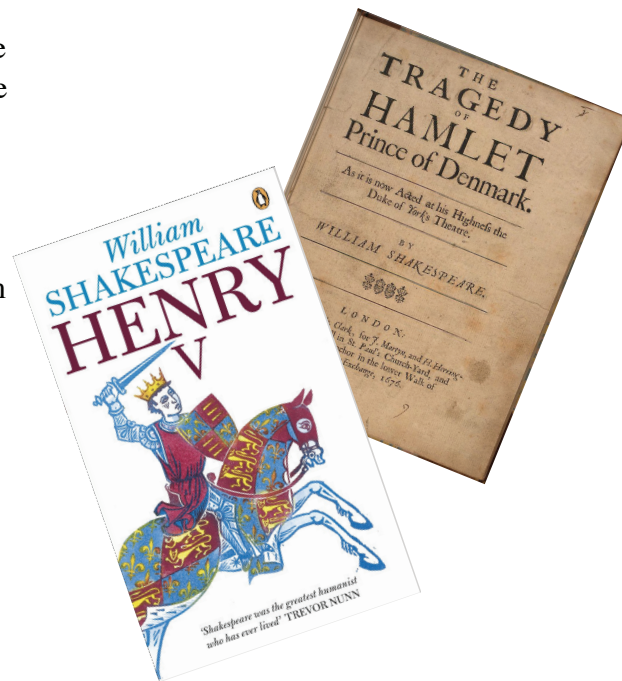
## 1599

The Globe theatre is built, Shakespeare's *Henry V*, *Julius Caesar*, *As You Like It*, *Hamlet*, and *Much Ado About Nothing* opens.

## Death

In 1616 William Shakespeare dies, King James I publishes his complete works.

[writersinspire.org](http://writersinspire.org) / [en.wikipedia.org](http://en.wikipedia.org)



An etching of Shakespeare's Globe Theatre



Shakespeare grave: Courtesy of Tom Roche

# The Renaissance, Plague & Theatre



Queen Elizabeth I of England. Reign: 1558 – 1603

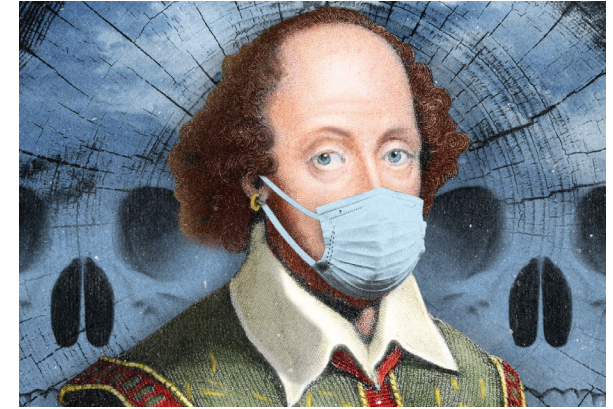


## Life in 16th Century London

During the sixteenth century, London approximately doubled its size to 200,000 inhabitants, which by today's standards seems small. During the Renaissance most of the English population resided in rural areas. Cities were crowded, considered dirty, and often dangerous. The greatest problem was public hygiene.

## Plague closes the theatre (sound familiar?)

From 1592 to 1593, London experienced its last major plague outbreak of the 16th century. During this period, at least 15,000 people died of plague within the City of London and another 4,900 died of plague in the surrounding parishes.



Shakespeare And The Plague | Culture

Shakespeare was entwined with the plague from his very beginning, as an outbreak killed a quarter of Stratford-upon-Avon's population in the year of his birth.

The outbreak in 1592-93 closed London's theatres and the decision would have been financially crippling to Shakespeare, who was only 28 years-old at the time.

In 1594, the theatres re-open and the first recorded performances of Shakespeare's *Titus Andronicus* and *The Taming of the Shrew* take place.

### ACTIVITY QUESTION:

How many Shakespeare plays can you name?

## Renaissance

The English Renaissance was a cultural and artistic movement in England dating from the late 15th to the early 17th century... The beginning of the English Renaissance is often taken, as a convenience, to be 1485, when the Battle of Bosworth Field ended the Wars of the Roses and inaugurated the Tudor Dynasty.

writersinspire.org / en.wikipedia.org  
The Atlantic.com

# ACTIVITY: WRITE YOUR OWN SONNET

**Instructions:** Choose a subject and write your very own sonnet just as the Bard did oh so many years ago.

Every Shakespearean sonnet has 14 lines, with 10 syllables per line (iambic pentameter). See example to the right.

- 1.
- 2.
- 3.
- 4.
- 5.
- 6.
- 7.
- 8.
- 9.
- 10.
- 11.
- 12.
- 13.
- 14.

## Sonnet 18: Shall I compare thee to a summer's day?

BY WILLIAM SHAKESPEARE

Shall I compare thee to a summer's day?  
Thou art more lovely and more temperate:  
Rough winds do shake the darling buds of May,  
And summer's lease hath all too short a date;  
Sometime too hot the eye of heaven shines,  
And often is his gold complexion dimm'd;  
And every fair from fair sometime declines,  
By chance or nature's changing course untrimm'd;  
But thy eternal summer shall not fade,  
Nor lose possession of that fair thou ow'st;  
Nor shall death brag thou wander'st in his shade,  
When in eternal lines to time thou grow'st:  
So long as men can breathe or eyes can see,  
So long lives this, and this gives life to thee.

**ACTIVITY QUESTION:**

Many TV, movie and theatre productions are based on Shakespeare plays. Can you name a few?

**Examples:**

*West Side Story* is a modern day *Romeo & Juliet*.

*10 Things I Hate About You* is a teen version of *The Taming of the Shrew*.

*The Lion King* is a reimagining of *Hamlet*.



# OUR EQUITY CAST



**JESSICA BLAIR** \*  
(Ensemble)

**JESSICA BLAIR** (Ensemble) Other PTC credits include: *Dirty Rotten Scoundrels*, *Oliver!*, *The Music Man*, *Sweet Charity*, *It Happened One Christmas*, and *A Christmas Carol: The Musical*. Some of her regional credits include: *Holiday Inn*, *Chicago*, and *Hello Dolly!* (Drury Lane Oabrook).



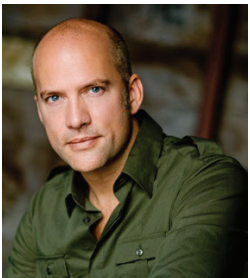
**GALYANA CASTILLO**\*  
(Bea)

**GALYANA CASTILLO** (Bea) Credits include: National Tour: *Elf the Musical* (Deb), *Fame* (Miss Sherman). Regional: *Rock of Ages* (Justice, Theatre Aspen), *Little Shop of Horrors* (Crystal, Fulton Theatre), *Seussical the Musical* (Sour Kangaroo, Stages St. Louis), *La Cage aux Folles* (Francis, Pioneer Theatre Company), *Lady Day at Emerson's Bar and Grill* (Billie Holiday, The Prizery), *Ain't Misbehavin'* (Nell Carter, Forestburgh Playhouse).

**LENNY DANIEL** (Ensemble/Associate Director) Choreographed *Mary Poppins* (Utah Shakespeare Festival) and *Spamalot* (Geva Theatre Center and Arkansas Repertory Theatre). Performing credits include Broadway: *Cats* (final original company) and *The Wizard of Oz*. NYC: *Sinatra* (Radio City Music Hall), *Wonderful Town* (NYC Opera).

**MARJORIE FAILONI** (Ensemble/as cast) Broadway: *Escape to Margaritaville* (Dance Captain/u/s Tammy). National Tours: *Escape to Margaritaville*, *9 to 5*, *Disney's High School Musical*. Favorite Regional credits: *Escape to Margaritaville* (La Jolla Playhouse), *A Christmas Story* (Tuacahn and Paper Mill Playhouse).

**MATT FARCHER** (Nick) returns to PTC after two wonderful experiences in *Fiddler on the Roof* as Fyedka and *The Count of Monte Cristo* as The Count. Matt was last seen as Charlie in *Kinky Boots* at the Fulton Theatre and in the original Broadway Cast of *Pretty Woman: The Musical*, and has been fortunate enough to participate in multiple Off Broadway, Regional, and National Tour productions as well.



**LENNY DANIEL**\*  
(Ensemble/Associate Director)

**DAN BOB HIGGINS** (Ensemble/as cast) National Tours: *West Side Story* (Diesel, Riff u/s) and *Elf*. Regional Credits: *Chasing Rainbows* (Goodspeed), *Bullets Over Broadway* (Ogunquit Playhouse), *Peter Pan* (Fulton), and more at MSMT, Flat Rock Playhouse, and Beef & Boards Dinner Theatre.

**MATTHEW HYDZIK** (Shakespeare) Broadway credits include Gregg Allman in *The Cher Show*, Buddy in *Side Show*, Greg in *It Shoulda Been You*, Tony in *West Side Story*, and Kenickie in *Grease*. Off-Broadway, Matthew starred as John in *Tomorrow Morning* at the York Theatre. National tours include *If/Then*, *Rent*, *Fame*, *Grease*, and *Flashdance*.



**MARJORIE FAILONI**\*  
(Ensemble)



**MATT FARCHER**\* (Nick)



**DAN BOB HIGGINS**\*  
(Ensemble)



**MATTHEW HYDZIK**\*  
(Shakespeare)

# EQUITY CAST CONT.

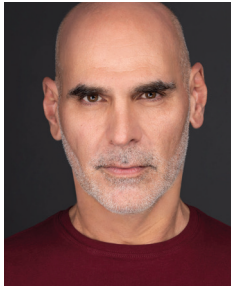


**ROBERT ANTHONY JONES\***  
(*Nostradamus*)

**ROBERT ANTHONY JONES** (*Nostradamus*) returns to PTC after having last appeared in *Cagney*. Other PTC shows include *The Music Man* as Marcellus and *A Christmas Carol* as Mr. Fezziwig. Broadway/National Tours: *Finding Neverland*, *The Phantom of the Opera*, *The 101 Dalmatians Musical*. Off Broadway: *Bunnacula*, *The Prince and The Pauper*.

**HOWARD KAYE** (*Shylock*) returns to PTC having performed in productions of *Peter and the Starcatcher*, *The Music Man*, *It Happened One Christmas*, *Oliver* and *Elf*. He has appeared on Broadway in *Miss Saigon*; Off-Broadway in *Silence! The Musical* and in the original North American Company of *Mamma Mia!*.

**KEVIN B MCGLYNN** (*Brother Jeremiah*) was last seen at Paper Mill Playhouse as George Jessel in the pre-Broadway run of the new musical *Chasing Rainbows*. Regionally, he has appeared in *A Christmas Carol*, Javert in *Les Misérables*, Lumière in *Disney's Beauty and the Beast* and Thomas Andrews in *Titanic*. National touring credits include *Kiss Me Kate*, *All Shook Up*, *Forbidden Broadway*, and *The Captain's Daughter* performed at the Hermitage in St. Petersburg, Russia.



**HOWARD KAYE\***  
(*Shylock*)

**T.J. NEWTON** (*Minstrel/Ensemble*) just concluded his run as Lin-Manuel Miranda as Alexander Hamilton on the First National Tour of *Spamilton*. Favorite credits include: Usnavi in *In The Heights* (Pittsburgh Musical Theatre), Chino in *West Side Story* (Connecticut Repertory Theatre), Ernie in *Sister Act* (Theatre Under the Stars), Willie Lopez in *Ghost* (White Plains PAC).

**DANIEL PLIMPTON** (*Nigel*) is returning to PTC after appearing in *Cagney* in 2019. Utah credits include the National Tours of *Book of Mormon* (SLC Debut Company) and *Spring Awakening*. Other tour: Irving Berlin's *White Christmas*. Daniel recently played two dream roles with Cosmo Brown in *Singin' in the Rain* and Phil Davis in *White Christmas*. Regional: Denver Center for the Performing Arts, Eugene O'Neill Theatre Center, Maltz Jupiter Theatre, North Carolina Theatre, Paper Mill Playhouse, Engeman Theatre, and more.



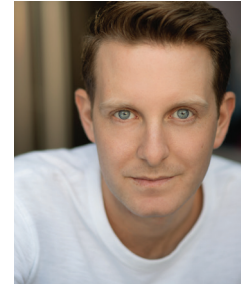
**KEVIN B MCGLYNN\***  
(*Brother Jeremiah*)

**JP QUALTERS** (*Ensemble*) returns to PTC for the third time! Education: Hartt School of Music. Credits include: First National Tour of *School of Rock* (Theo), and First National Tour of *Kinky Boots*. Regional favorites: PCLO, NSMT, Signature and Fords Theatre, Riverside Theatre, ZACH Theatre!

**LEXI RABADI** (*Portia*) Previous credits include: Off-Broadway in *Hannah Senesh*, a one-woman play with music (National Yiddish Theatre Folksbiene), Belle in *Disney's Beauty and the Beast* (Fulton Theatre, Maine State Music Theatre), Laura in *The Glass Menagerie* (Fulton Theatre), Belle in *A Christmas Carol* (Actors Theatre of Louisville), and most recently, *Kismet* directed by Lonny Price (Granada Theatre).



**T.J. NEWTON\***  
(*Minstrel/Ensemble*)



**DANIEL PLIMPTON\***  
(*Nigel*)



**JP QUALTERS \***  
(*Ensemble*)



**LEXI RABADI \***  
(*Portia*)