

The Prom

Book and Lyrics by **Chad Beguelin**

Book by **Bob Martin**

Music by **Matthew Sklar**

Based on an original concept by **Jack Viertel**

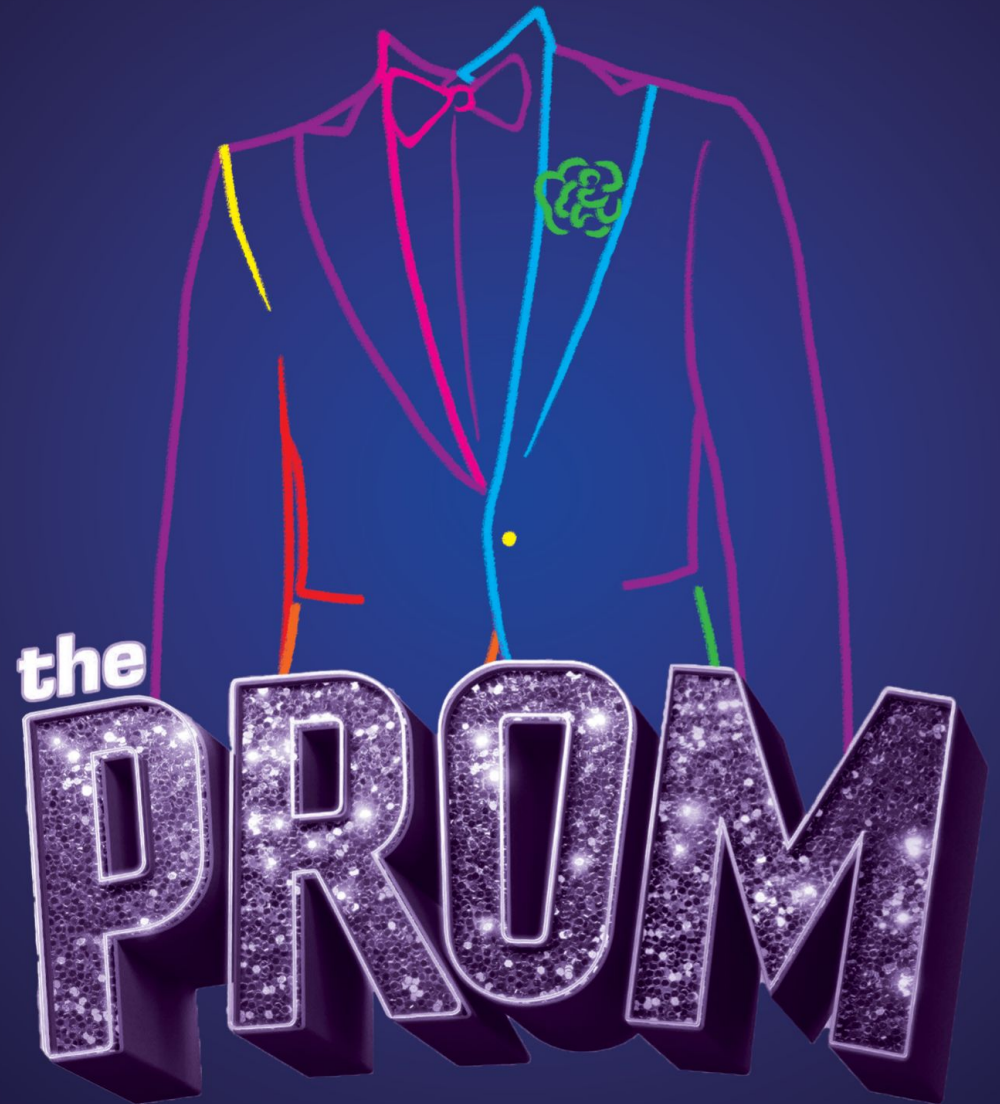
Directed & Choreographed by **Karen Azenberg**

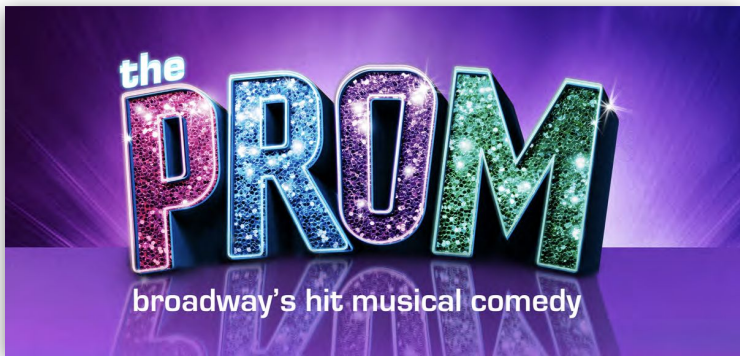
May 12- 27, 2023

SPOTLIGHT STUDY GUIDE For Teachers and Students



Pioneer Theatre Company's Student Matinee Program is made possible through the support of Salt Lake County's Zoo, Arts, and Parks Program, The Simmons Family Foundation, and The Meldrum Foundation Endowment Fund.





SYNOPSIS: In a desperate need of a noble cause to revive their public images, self-centered Broadway thespians Dee Dee Allen and Barry Glickman have come up with a foolproof plan to earn some positive publicity. In the national media, they read about Emma, a bright-eyed high-school student who has recently come out of the closet and only wants to take her girlfriend to the prom without drama. Intolerance and the local PTA stand in her way. The flamboyant celebrity activists and their fellow struggling actors, Angie Dickinson and Trent Oliver, head to the small town of Edgewater, Indiana, to right a wrong, with some hilarious bumps along the way.

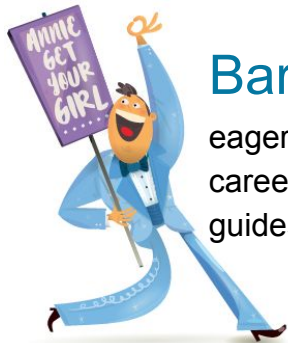
CHARACTERS



Emma - shy and warmhearted high school senior simply wishing to dance with her girlfriend at the prom. She struggles to follow her heart against community pressures.

Dee Dee - TONY® winning actress

desperately trying to increase her celebrity and publicity by tackling Emma’s cause. Dee Dee discovers that true charity can outshine celebrity.



Barry - self-involved Broadway actor eager for celebrity activism to promote his career. Barry finds a kindred spirit in Emma and guides her to be true and proud of herself.

Alyssa Greene - Emma’s love interest

who’s caught between her feelings for her girlfriend and the pressures of letting her mom know the truth of who she really is.



Mr. Hawkins - concerned principal of the school and star-struck Broadway fan trying to create a prom for everyone while educating Dee Dee in self-sacrifice.

Trent - “Juilliard Trained,” yet struggling, actor who utilizes his small TV celebrity to teach the students lessons of tolerance.



Angie - Experienced and knowledgeable Broadway musical veteran who champions Emma’s cause and teaches Emma how to live life with Zazz!

Mrs. Greene -

Alyssa’s mother and president of the PTA who’s committed to maintain a “traditional” prom. She’s too caught up in her own cause to realize her daughter’s desire to reveal who she loves.



Sheldon - Broadway publicist working his skills and connections to build his clients’ celebrity status and create an audience for Emma’s message.

Creating the Musical

The following are excerpts from an interview conducted by Broadway's original "Sheldon," Josh Lamon, with the show's writers of Bob Martin, Chad Beguelin, and composer Matthew Sklar

Josh Lamon: From your perspective as lyricist and co-book writer, what has the show been like going through the changes from day one around the table, to the labs and Atlanta, to now?

Chad Beguelin: "It's changed so much. I think the biggest change, I mean, we're constantly tweaking it and working on it, but the world sort of changed. We were thinking that the world has gotten so much more accepting and wondering if this was as relevant, and then the (2016) election happened, and it suddenly became so important and so relevant. All of these things we thought we were past— suddenly the show took on this new level of immediacy. I couldn't predict that would happen. It's been a great journey and having this great cast has been so much fun for all of us to write for. It's been great. We were really concentrating on this last pass of the script and the score to make sure that we didn't show the other side to be completely caricatures. We wanted to make sure that everyone was dealt with fairly— these people just had different beliefs and they had to work through them throughout the show."

Josh Lamon: One of my favorite things about THE PROM is that it is hilarious but also serious. We are talking about an actual story that happened.

Bob Martin: "Several actually. It's based on several incidents that happened and continue to happen across this wonderful country."



Josh Lamon: What was it like tacking the comedy versus the serious material?

Bob Martin: "I like the combination of making potentially unpalatable truths easier to take when they're surrounded by people like you. You're the sugar that makes the medicine go down easily. I think what's really interesting about this show is that people cry, but it's an extremely funny show. As you can see there's a mixture of very broad comedy and the very grounded, serious story at the heart of it all. It was remarkable to have people come up to us after the show and be so moved. I had this woman come with her head down and confess that she was the mother depicted in the story with tears in her eyes making this confession to us. I think it is a very moving show for that very reason."

Josh Lamon: What was unique about this process for you?

Matt Sklar: "Well, it's one of the first times I've ever really written something completely original from the ground up. Anything else I've ever written has had some kind of source material. So this was a great opportunity and I just love working with these guys [Chad Beguelin and Bob Martin] and with Casey [Nicholaw]. I think we all bring out the best in each other. The story is just so moving. Once we started outlining the story, seeing where it was going and figuring out where the songs would go, it felt like both sides complimented each other— the comedy and the dramatic aspect of it. It's been a joy to work on."

All the World's a Stage

The Prom is sometimes a love letter to musical theater in many ways: The character “Trent” is described as a pretentious Juilliard graduate recently cast in the non-Equity tour of *Godspell*.

Juilliard School

Located at the Lincoln Center for Performing Arts, the Juilliard School is a private performing arts conservatory in New York City. Established in 1905 as the Institute of Musical Art, the school became the Juilliard School of Music in 1946 and was renamed the Juilliard School with music, dance, and drama programs. It is widely regarded as one of the most elite performing arts schools in the world.

Prominent alumni of Juilliard have garnered more than 105 Grammy Awards, 62 Tony Awards, 47 Emmy Awards, 24 Academy Awards, 16 Pulitzer Prize, and 12 National Medals of Arts.



https://en.wikipedia.org/wiki/Juilliard_School

GODSPELL THE MUSICAL

Godspell is a musical composed by Stephen Schwartz with book by John-Michael Tebelak. The show is structured as a series of bible parables, primarily based on the Gospel of Matthew, interspersed with music mostly set to lyrics from traditional hymns, with the passion of Christ appearing briefly near the end.

Godspell began as a project by drama students at Carnegie Mellon University and then moved to the off-off-Broadway theater. The show was rescored for an off-Broadway production, which opened on May 17, 1971, and became a long-running success. Many productions have followed worldwide, including a 2011 Broadway revival.

Popular songs from the show include “Day by Day,” “We Beseech Thee,” and “Beautiful City.”

<https://en.wikipedia.org/wiki/Godspell>



All the World's a Stage - Give It Some "Zazz!"

Meanwhile, the character "Angie" is a jaded Fosse girl in the Broadway production of Chicago.

CHICAGO, the Musical

The record-breaking, longest-running show in Broadway history, *Chicago* tells the story of Roxie Hart and Velma Kelly, both accused of murdering their husbands, as they prepare for and eventually go to trial. Instead of becoming pariahs, they became celebrities. In the musical, Roxie and Velma compete for the attention of smooth-talking lawyer Billy Flynn, who gets their stories on every city newspaper's front page.

Composer, John Kander, and Lyricist, Fred Ebb, along with Director/Choreographer, Bob Fosse, took inspiration from real life historical trials and modeled the musical after a vaudeville revue, a popular performance type in the '20s, to emphasize the sensationalized nature of criminal trials back then.

Popular songs include, "All That Jazz" and "Razzle Dazzle."



BOB FOSSE

Bob Fosse was a dancer and choreographer who, with his distinct style, reshaped the aesthetics of modern musical theater. When you see a Fosse dance move, you *know* it's a Fosse move. Think curved shoulders, turned-in knees, bowler hats, punctuated hand movements, finger snaps, sideways shuffling — and, yes, *jazz hands*.

The style ended up being inextricably linked to the multiple Broadway musicals he choreographed, including *The Pajama Game* (1955), *Damn Yankees* (1956), *Sweet Charity* (1966), *Pippin* (1973), and *Chicago* (1975).

Though Fosse got his start in live theater, his moves are visible all over cinema, too. Fosse directed five feature films. The first was *Sweet Charity* (1969), a movie adaptation of the theater version. He also directed the movie *Cabaret* (1972), which starred Liza Minnelli in her Oscar-winning role. Though he died before he could adapt *Chicago* for a film, his jazz choreography features heavily in the 2002 Oscar-winning movie.

ACTIVITY: Song Exploration

Characters in literature and in musicals often reveal themselves directly by describing their personality and their situations. Alyssa reveals many things about herself in the aptly titled song: “Alyssa Greene.” Use the selected lyrics below to look into her character.



ALYSSA:

THE HAIR HAS TO BE PERFECT
THE “A’S” HAVE TO BE STRAIGHT
YOU HAVE TO JOIN THE DEBATE CLUB
ON THAT THERE’S NO DEBATE

YOU’LL HAVE BIBLE CAMP EACH SUMMER
TO KEEP YOU PURE AND CLEAN
ENDLESS RULES APPLY
WHEN YOU’RE ALYSSA GREENE

TROPHIES HAVE TO BE FIRST PLACE
RIBBONS HAVE TO BE BLUE
THERE’S ALWAYS SOME COMPETITION
OR HOOPS FOR JUMPING THROUGH

YOUR MOM’S MADE SACRIFICES
SO WIN HOMECOMING QUEEN
‘CAUSE IT’S DO OR DIE
WHEN YOU’RE ALYSSA GREENE

What do we learn about Alyssa’s situation in this song?

How do the activities she mentions conflict with who she’d like to be?

Can you sympathize with her after she reveals herself in this song? Why or why not?

<https://www.broadwayinbound.com/product-resources/the%20prom%20study%20guide%20final.pdf>

Eleanor! - the Eleanor Roosevelt Musical

While the musical featured at the beginning of *The Prom* is a fictional one, it is based on a historical person:

Eleanor Roosevelt became the First Lady when her husband, Franklin D. Roosevelt, was inaugurated as President of the United States on March 4, 1933. The job of the First Lady had always been to host parties and entertain foreign dignitaries and political leaders. Eleanor decided she could do more than this.

America was in the middle of the Great Depression and people around the country were struggling to find jobs and even to have enough to eat. Franklin created the New Deal to try and help poor people recover. Eleanor decided to travel around the country to see how people were doing. She let her husband know where people needed help, and where his programs were and weren't working.

When Japan attacked the United States at Pearl Harbor, Franklin had no choice but to declare war and enter World War II. Eleanor went to work for the Red Cross. She traveled to Europe and the South Pacific to visit the sick and the wounded and to let the troops know how much they were appreciated.

On April 12, 1945, Franklin died of a stroke. Still, for seven years Eleanor represented the United States at the United Nations (UN), which was created in large part by her husband. While a member, she helped to write the Universal Declaration of Human Rights which described that people throughout the world should be treated fairly and had certain rights that no government should be able to take away.

Eleanor died on November 7, 1962. She was buried next to her husband Franklin. After her death Time Magazine called her the "world's most admired and talked about woman."

https://www.ducksters.com/biography/women_leaders/eleanor_roosevelt.php



Activity: Pretend that you are writing an *Eleanor!* Musical and think of a moment in her life that you think would be perfect for a song that Eleanor could sing.

What moment in her life would this song be about?

What would the song title be?

“It’s Time To Dance”

A Brief History of Prom



The word prom is short for promenade, the formal, introductory parading of guests at a party. The prom can be traced back to the simple co-ed banquets that 19th century American universities held for each year's graduating class. By the 1920s, the tradition trickled down to the American high schools in the form of a "democratic debutante ball" and by the 1940s the adolescent dance we know today had almost entirely taken hold.

Proms really took off in the 1950s, when a post-war boom and new consumer market geared toward teenagers made the celebration a mainstay of the high school year—and one that boys should invite girls to, not vice versa.

After *Brown vs. Board of Education* was decided in 1954, white schools in the south actively worked to undermine the Supreme Court's ruling that schools couldn't segregate students by race. In the 1960s and '70s, many white schools that had integrated their classrooms began to hold two proms: one for white students and one for Black students. In the famous case of Charleston High School in Mississippi, white parents began organizing invite-only proms for white students in 1970, the year Black students began attending. In response, Black parents organized their own prom for their kids.

It wasn't until 1979 that the first openly gay couple came to prom in Sioux Falls, South Dakota. Classmates threatened the couple with tar and feathering, in typical 1779 fashion.



“It’s Time To Dance” - cont.

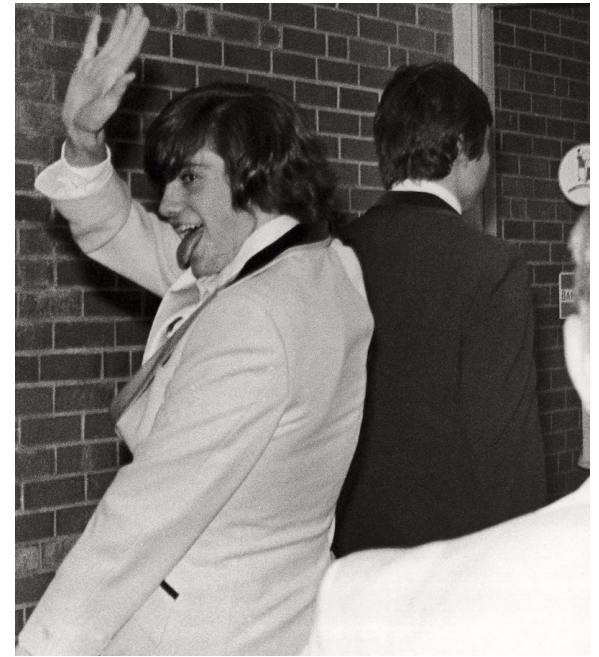
In 1980, *Fricke v. Lynch* prohibited public high schools from discriminating against students who wanted to bring other students of the same sex to prom. Other cases have since ruled that schools cannot mandate restrictive sex-specific dress codes, like tuxedos for boys and dresses for girls.

It wasn't until 2010 that America appointed its first openly transgender prom queen, Corey Rae of New Jersey.

Even though LGBTQ youth still struggle at prom, that doesn't mean we haven't seen improvement. There are now dozens of proms held every year outside of traditional school districts for kids who feel uncomfortable going to their own prom.

More LGBTQ kids appear to be coming out and showing up to prom than ever before. And students across the country are now attending proms by themselves or in groups of friends rather than couples. As much as we might want to mock the tradition, it still plays a critical symbolic role in American culture.

<https://content.time.com/time/magazine/article/0,9171,1987594,00.html>
<https://www.history.com/news/prom-racist-history-19th-century-origins>
<https://mashable.com/feature/queer-prom-takeover>



Aaron Fricke, a gay student who sought a court order to allow him to bring a male friend to his high school prom.

PAUL BENOIT/AP/REX/SHUTTERSTOCK



LATE 19th CENTURY
Prom begins as a formal co-ed banquet at elite universities

1920's
Prom is popularized at American high schools as a "democratic debutante ball"

1979
First openly gay man and his gay friend come to prom in Sioux Falls, South Dakota

1980
Fricke v. Lynch upholds the right of queer students to bring dates of their choice to prom

1994
The first "gay prom" happens in Los Angeles, California

2010
Corey Rae becomes the first openly transgender prom queen in America

SOURCES: TIME MAGAZINE, ACLU, LOS ANGELES TIMES

Mashable

Advocacy

In the song “Unruly Hearts”, Emma sings “and nobody out there ever gets to define the life I’m meant to lead, with this unruly heart of mine.” Her story generates millions of views and other students related to her song.

- **Self Advocacy is speaking up or acting for your own best interest. Have you ever advocated for yourself?**

Bullying

Throughout the show Emma experiences anti LGBTQ+ bullying at her school. From the scene at her locker to a later scene where not only students but parents humiliate Emma.

- **Does your school have an anti bullying policy that you are aware of?**
- **What is the process for reporting bullying?**
- **When someone is bullied, what are some ways to intervene?**



Solidarity & Allyship

Principal Hawkins is an Ally and is supportive of Emma even when Emma was not in the room.

- **How have adults/educators shown up for you in a supportive way?**

After Dee Dee and Barry get slammed in the papers for being narcissists, they come up with a plan to use Emma’s situation to their benefit. They decide to go to Indiana and save the day hoping it will make them look like good activists.

- **What are important actions and intentions to building genuine solidarity and allyship with people you are supporting?**
- **How have you experienced meaningful solidarity and allyship?**
- **What made your experience meaningful?**



Terminology & Resources

LGBTQ

L - Lesbian - A person who is female-identified and who is emotionally and/or physically attracted to some other females.

G - Gay - A person who is emotionally and/or physically attracted to some members of the same gender. “Gay” often refers to a male-identified person who is emotionally and/or physically attracted to some other males.

B - Bisexual - A person who is emotionally and/or physically attracted to two genders. For example, a person attracted to some male-identified people and some female identified people.

T - Transgender - A person whose gender identity and/or expression are not aligned with the gender they were assigned at birth. “Transgender” is often used as an umbrella term encompassing a large number of identities related to gender nonconformity.

Q - Queer - An umbrella term used to describe a sexual orientation, gender identity, or gender expression that does not conform to dominant societal norms.

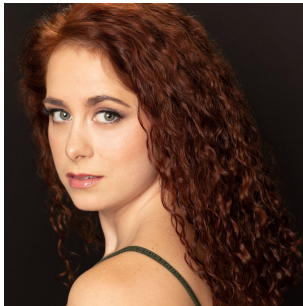
Questioning - A person who is in the process of understanding and exploring what their sexual orientation and/or gender identity and gender expression might be.

- Trevor Lifeline – the only nationwide, 24/7 crisis intervention and suicide prevention lifeline for LGBTQ young people, available at 1-866-488-7386.
- TrevorChat - a free, confidential, secure instant messaging service that provides live help to LGBTQ young people, through The Trevor Project website at <https://www.thetrevorproject.org/get-help-now/> Available at designated times every day of the week.
- TrevorSpace – an online, social networking community for LGBTQ young people, 13-24, their friends and allies (www.TrevorSpace.org).
- Trevor Support Center – a place where LGBTQ youth and their allies can find answers to frequently asked questions, and explore resources related to sexual orientation, gender identity and more ([Trevor Support Center](#)).
- Trevor Lifeguard Workshop – a structured, age-appropriate digital curriculum that addresses topics including sexual orientation and gender identity, the impacts of language and behavior on LGBTQ youth, and suicide prevention skills in schools ([Trevor Lifeguard Workshop](#)).
- TREVOR RESOURCES FOR ADULTS - [Trevor Project Education](#)
- Trevor Ally Training – This training for adults informs participants about the needs and experiences of LGBTQ youth and the best practices associated with supporting and serving this unique community.
- Trevor CARE Training – This training for educators, school staff, mental health professionals, and other adults discusses LGBTQ-specific risk factors for suicide, explores protective factors, and helps attendees understand how to support LGBTQ youth in crisis.

Meet Our Equity Cast



JOSH ADAMSON* (Trent Oliver) Originally from Australia, Josh recently wrapped filming on the feature movie *Book of Job* starring as Job, season two of *Almost Paradise* on Amazon Prime, and a recurring role on *General Hospital*. American theater credits include *Big Fish* (Theater Critics' Circle Award Nomination), *The Producers*, *Catch Me If You Can*, *Aida*, *Funny Girl*, *Footloose*, *Annie*. Broadway: *Taboo* workshop, Hook in the London 360 production of *Peter Pan*, the world premiere of *Did You See What Walter Paisley Did Today?*. Movie & TV credits include *The Wedding Video*, *Unidentified*, *Look @ Me*, *Desert of Blood*, *Portal*, *Painting in the Rain*, *First Landing*, *The Clean-Up Woman*, *Make It or Break It*, and *Big Time Rush*. Thanks to DDO Artists Agency, friends, and family for their love and support. Instagram: @joshadamsonn



LUCY ANDERS* (Ensemble) is excited to be back at PTC! First National Tour: *Something Rotten* (Ensemble, u/s Portia). New York Theatre: *The Bachelor Girls*, *Hip Hop Cinderella*, *Goodman*, and *Baby!* (Lizzie). Regional includes: *Newsies* (Katherine), *Hello, Dolly!*, *Dirty Rotten Scoundrels*, *Grease*, *Sweeney Todd*, *Love Story: The Musical*, *Richard III*, *Much Ado About Nothing*, *A Little Night Music* (Anne), *Starmites*, *The Sound of Music*, *Oliver!*, *A Chorus Line* (Maggie), *Follies* (Young Heidi), and Humperdink's *Hansel and Gretel* (Gretel). BWMT Instagram: @luscqueal. For Grandma and Poppa. Special thanks to BRS/GAGE.



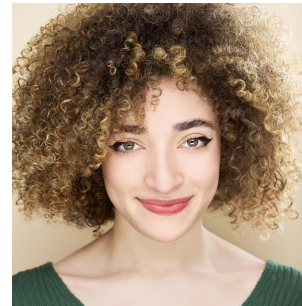
KYLE CARESS* (Ensemble) is happy to be back for his fourth show at PTC! National Tours: Disney's *Aladdin*, *R+H's Cinderella*. Off Broadway: *Seesaw* (J2 Spotlight). Select regional: The Rev, Bucks County Playhouse, Studio Tenn. BFA in Musical Theatre with a Dance Minor from Belmont University. Kyle sends his love to his friends, family, mentors, and Danny and Meghan at HAA for their support. IG: @Kyle_Caress



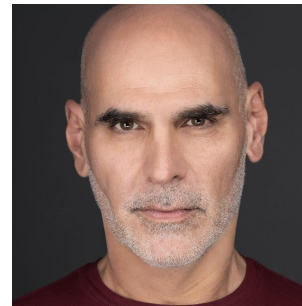
LENNY DANIEL* (Ensemble, Associate Director) Choreographed *Mary Poppins* (Utah Shakespeare Festival) and *Spamalot* (Geva Theatre Center and Arkansas Repertory Theatre). Directed and choreographed *Mid-Life! The Crisis Musical* (TexARTS); choreographed *The Little Mermaid* (Forestburgh Playhouse); assistant directed *The Wizard of Oz* National Tour starring Mickey Rooney and Eartha Kitt; assistant choreographed *Gigi* (Papermill Playhouse), assisted Ann Reinking and performed in *Here Lies Jenny* starring Bebe Neuwirth (NYC & SF). Performing credits include Broadway: *Cats* (final original company) and *The Wizard of Oz*. NYC: *Sinatra* (Radio City Music Hall), *Wonderful Town* (NYC Opera). Tours: *Spamalot*, *Chicago*, *South Pacific*, *Camelot*, *Jekyll & Hyde*. Favorite Regional: *Something Rotten!*, *La Cage aux Folles*, *Sweeney Todd*, *Newsies*, *Chess*, *Oliver!*, *The Last Ship* (PTC), *Two Gentlemen of Verona* (Baltimore Center Stage), *Mary Poppins*, *Peter Pan* (Alabama Shakespeare Festival), *Gigi*, and *Evita* (Paper Mill Playhouse).



BERNARD DOTSON* (Mr. Hawkins) is thrilled to be making his debut at Pioneer Theatre Company! Bernard began his career traveling nationally and internationally singing the Walt Disney Songbook. Broadway: *Paradise Square*, *Finian's Rainbow* (First Gospeler, Original Revival Cast), *Chicago* (Billy Flynn), *Imaginary Friends* (Leo, Original Cast), *Sweet Smell Of Success* (Club Zanzibar Singer, Original Cast), *Jesus Christ Superstar* (Original Revival Cast), and the Tony Award-winning musical *Ragtime* (Original Cast). Regional, national, and international tours include: *Smokey Joe's Cafe*, *Five Guys Named Moe*, *Kiss Me Kate*, *Joseph And The Amazing Technicolor Dreamcoat*, *A Chorus Line*, and *Merrily We Roll Along*, just to name a few. Selected Concerts: *Dreamgirls*, *The Music Of Frank Loesser*, *She Loves Me*, and the 25th Anniversary of *Ragtime!* Two is Best!!



MIA CHERISE HALL* (Alyssa Greene) is thrilled to be a part of *The Prom* at Pioneer Theatre Company! Originally from Rochester NY, she grew up around the music of her parents and the IB arts curriculum. They are a Jimmy Awards alum and winner of *BroadwayWorld's* Next on Stage. Past shows include *Spring Awakening* (Anna), *Pippin* (Leading Player), and *Little Shop of Horrors* (Crystal). When not performing, Mia loves brand marketing, making TikToks (@miacherisehall), and *Gilmore Girls*. They would like to thank Sean and Rikky at The Hybrid agency, Mom and Dad, Janae, Suraiya, and Eric. Enjoy the show!



HOWARD KAYE* (Sheldon, u/s Barry) Howard Kaye returns to Pioneer Theatre Company for his eighth production. Previous shows include *A Christmas Story - The Musical*, *Peter and the Starcatcher*, *The Music Man*, *It Happened One Christmas*, *Oliver*, *Elf*, and *Something Rotten!*. As a native of Cincinnati, he is glad to come back to Salt Lake, his artistic home. Much thanks to Karen, Lenny, and the entire fantastic staff at PTC. He has appeared on Broadway, Off-Broadway, many regional theaters and one of his favorite credits as the original Broadway guest artist for the Disney Cruise Line. Howard is a graduate of CCM and Julliard Drama School.



MICKI MARTINEZ* (Ensemble, u/s Angie) is so excited to be back at Pioneer Theatre Company for *The Prom!* Other PTC credits include: *Something Rotten*, *Elf the Musical*, *Dirty Rotten Scoundrels*, *La Cage Aux Folles*, and *In the Heights* (Nina Rosario). Martinez holds a BFA from the University of Utah and attended her own prom at the Salt Lake School for the Performing Arts. She would like to thank her family and friends for their encouragement and support! @micki_martinez

Meet Our Equity Cast



JP QUALTERS* (Ensemble, u/s Trent) is very excited to be back at Pioneer Theatre Company for the fourth time. He was seen last season in *Something Rotten!* as Peter Quince. Touring credits include: First National *Kinky Boots*, First National *School of Rock!* Regional favorites: PCLCO, Ford's Theatre, NSMT, Riverside, and Theatre by the Sea. Special thanks to Karen, Lenny, Take 3 Talent and for the love and support from his family! JP also is a proud type 1 diabetic!



ERIN WILSON* (Mrs. Greene, u/s Dee Dee) TV/Film: *The Last OG* (TBS), *Holiday for Heroes* (Hallmark), *Tales of the City* (Netflix), *Public Morals* (TNT). Broadway and national tours: *Wicked*, *Sister Act*. Regional: The Muny, Sacramento Music Circus, North Carolina Theatre, Tuacahn, and more! Thrilled to be making my Pioneer Theatre debut! Proud owner of Erin Wilson Studio for vocal training and audition coaching. ErinWilson.com



CELESTE ROSE* (Emma Nolan) is so excited to be bringing this important story to Pioneer! Off Broadway: *We Are the Tigers*, *Unexpected Joy* (The York Theatre Company). Select Regional Credits: *Passing Through* (Goodspeed Opera House), *Connecticut Christmas Carol* (Goodspeed Opera House), *Sister Act* (Ogunquit Playhouse and The Gateway Playhouse), *Freaky Friday* (Lyric Theatre Of Oklahoma), *Bernice Bobs Her Hair* (Lyric Theatre of Oklahoma), and *Titanic* (Westchester Broadway Theatre). BFA Ithaca College. Love and never ending thanks to my family, always. Follow along on IG @_Celeste_Rose or at CelesteRose.com.



BRANCH WOODMAN* (Barry Glickman) appeared in *The Music Man* starring Hugh Jackman and Sutton Foster. Prior Broadway credits include *Hello, Dolly!* with Bette/Bernadette/Donna; *Cinderella*; *Priscilla, Queen of the Desert*; *Bye Bye Birdie*; and *Crazy For You*. Other New York credits include *Disappearing Act*, *Out of This World*, Patti Lupone's Carnegie Debut, and concerts at Lincoln Center. He has toured in *Big, Billy Elliot*, and *Cinderella*. He's proudly worked at Goodspeed, Paper Mill, Skylight Music Theatre, Sierra Rep, Actors Theatre, Louisville, and can be heard on the soundtracks of *Schmigadoon*, *The Marvelous Mrs. Maisel*, and HBO's *Love and Death*. His career is the direct result of a childhood spent at The Gallery Theatre in his native Southern California, run with love and care by Mark Shipley and family, to whom he dedicates his work in *The Prom*.



ANNE TOLPEGIN* (Dee Dee Allen) is thrilled to be back at PTC (thank you, Bob Cline and The Collective!) where audiences have seen her as Mrs. Lovett in *Sweeney Todd*, Peggy in Sting's *The Last Ship* and Mary in *Women in Jeopardy!*. Broadway: *A Tale of Two Cities*, *Les Misérables*. National Tours: *Kinky Boots*, *Billy Elliot*, *Mamma Mia!*, *Ragtime*. Off Broadway: *Carrie Standby* to Marin Mazzie (Margaret), *Sweeney Todd Standby* to Carolee Carmello (Mrs. Lovett). Regional: Diana in *Next to Normal* (Fulton Theatre), Mother Superior in *Sister Act* (Pittsburgh CLO), Fosca in *Passion* (Pegasus Players). Television: USA's *Mr. Robot*, Marvel's *Iron Fist*. International Philharmonic performances in Mexico, Canada, Japan. Northwestern University alum. Proud wife to Blake Stadnik and mom to Sherlock the pooch. Thank you for supporting live theatre! [IMDB.me/AnneTolpegin](https://www.imdb.com/name/nm1045444/)



WENDY WARING* (Angie Dickinson) Born in Melrose MA, raised in Weston CT, daughter of a restaurateurs. She is thrilled to be making her PTC debut and working under the direction of Karen Azenberg, her fellow NYU Tisch grad classmate! She has appeared in five Broadway shows: Ulla in *The Producers*, *Follies*, Irene in *Crazy for You*, Z's Favorite in *The Will Rogers Follies*, and *Legs Diamond*. Regionally, she has starred in the world premiere plays *Madame Defarge* (Gloucester Stage), *Degage* (Hangar Theater), and *Let Me Fluff Your Pillow* (Off Broadway.) Her short film, *Always*, will debut this year. She lives with her actor husband John Hillner in NYC, where she raised her two boys Nicholas, Jackson, and step-daughter Amy. She is a professional organizer and a member of the Polar Bear Club. WendyWaring.com

*Member of Actors' Equity Association